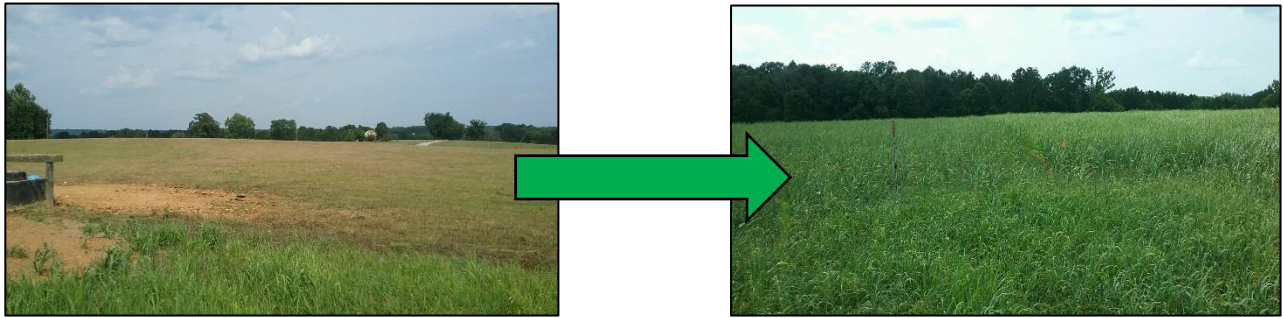


Pasture Walk

Demonstrating conversion of wildtype to novel endophyte fescue pastures for greater livestock performance and better environmental outcomes



Tall fescue compared to a highly productive summer annual mix in neighboring field after 30 days of no rain. A variety of summer annuals have been donated by Halifax SWCD, Dodd's Farm Supply, King's Agriseeds, and CPS-South Hill for this project. Come evaluate the different mixtures and a variety of fertilizer treatments, while discussing the use of a smother crop to convert toxic tall fescue pastures into non-toxic pastures.

August 17, 2017

Calvin Honeycutt's Farm

1129 Honeytree Rd.

Chase City, VA 23924

Dinner will be served at 6:00 PM, sponsored by the Lake Country SWCD. Please RSVP by calling the Lake Country SWCD at (434) 738-0150 or the Mecklenburg VCE at (434) 738-6191 ext. 4371 by August 14th.



This demonstration is partially funded by a USDA-NRCS Conservation Innovation Grant

If you are a person with a disability and desire any assistive devices, services, or other accommodations to participate in this activity, please contact Margaret Kenny at (434) 292-5331 ext. 7 during business hours (M-F: 8:00 am to 4:00 pm) five days prior to the event to discuss those accommodations.



**Dodd's Farm
Supply**



Virginia Cooperative Extension

Virginia Tech • Virginia State University

www.ext.vt.edu